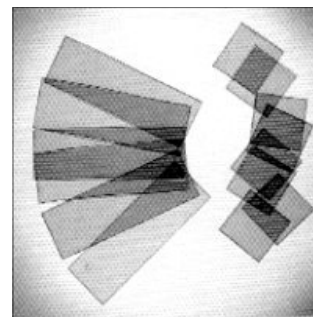


Mica Sheets

High grade mica for making freshly cleaved surfaces for such EM applications as carbon filming and particle spraying. Also suitable for high resolution AFM studies, growing cells and thin film coating research.

Available in the following sizes as stock items, other sizes can be supplied please enquire.

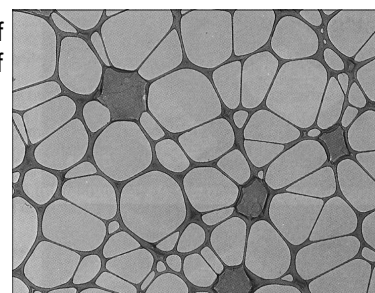
| | | |
|-------------|--|------------|
| M054 | Mica 3" x 1" x 0.006" thick (75 x 25 x 0.15mm) | 20 sheets |
| M055 | Mica 1" x 1" x 0.006" thick (25 x 25 x 0.15mm) | 20 sheets |
| M459 | Mica 11 x 11 x 0.15mm thick | 20 sheets |
| M460 | Mica 100 x 20 x 0.15mm thick | 20 sheets |
| M461 | Mica 150 x 150 0.15mm thick | 3 sheets |
| M462 | Mica 9.9mm dia x 0.1mm thick | pack of 10 |
| M463 | Mica 20 x 20mm thick ultra clean | 10 sheets |



Lacey Carbon Films

These are carbon films with large holes, which make them particularly suitable for the support of acicular crystals. Much of the crystal is unsupported and therefore subject to a minimum of incoherent scattering from the film.

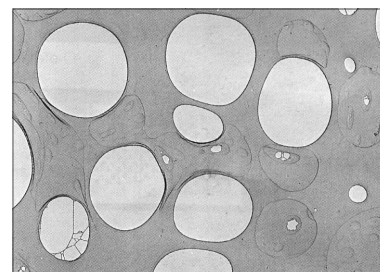
| | | |
|---------------|--|----|
| C269/C | Lacey carbon film 300 mesh, 3.05mm, Cu | 50 |
| C269/N | Lacey carbon film 300 mesh, 3.05mm, Ni | 50 |
| C270/C | Lacey carbon film 400 mesh, 3.05mm, Cu | 50 |
| C270/N | Lacey carbon film 400 mesh, 3.05mm, Ni | 50 |
| C270/G | Lacey carbon film 400 mesh, 3.05mm.Au | 50 |



Holey Carbon Films

These are similar to lacey carbon films with smaller holes.

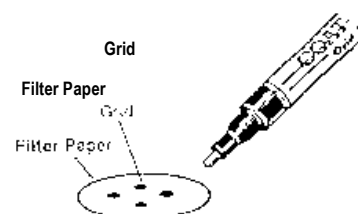
| | | |
|---------------|--|----|
| C062/C | Holey carbon film 300 mesh, 3.05mm, Cu | 50 |
| C062/N | Holey carbon film 300 mesh, 3.05mm, Ni | 50 |
| C062/G | Holey carbon film 300 mesh, 3.05mm.Au | 50 |
| C274/C | Holey carbon film 400 mesh, 3.05mm, Cu | 50 |
| C274/N | Holey carbon film 400 mesh, 3.05mm, Ni | 50 |
| C274/G | Holey carbon film 400 mesh, 3.05mm.Au | 50 |



Grid Coating Pen

The Grid Coating pen improves the adherence of tissue sections onto the grids. With a touch of the pen to the grid, a thin layer of coating is applied to the grid. Drying takes place in 1-2 minutes at room temperature. After it has dried the grid is ready for section mounting. The pen can also be used in pretreating grids prior to mounting support films such as formvar and carbon. This minimises dislodging, widening or breaking of the support film.

| | | |
|-------------|------------------|---|
| P293 | Grid Coating Pen | 1 |
|-------------|------------------|---|



Grid Coating Stand

A stand designed with 49 recessed holes suitable for 3.05mm diameter grids. A groove is carefully machined to the correct depth which allows safe and easy access for tweezer manipulation of the grids.

Standing on 3 integral feet it is easily placed in a low glass dish to allow thin collodion or formvar films to be lowered onto the grids by siphoning off the water. The coated grids can then be transferred to the coating unit.

| | | |
|-------------|-------------------------------|---|
| G122 | Grid coating stand, thin film | 1 |
|-------------|-------------------------------|---|

